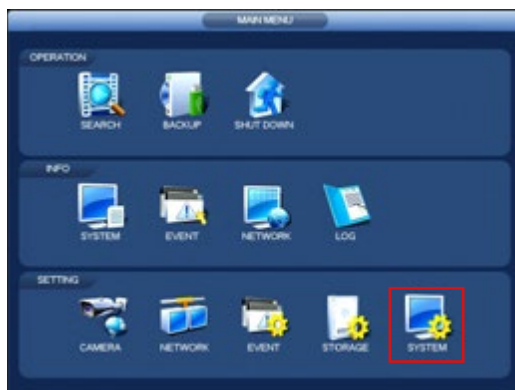


Limit Features of Guest Accounts

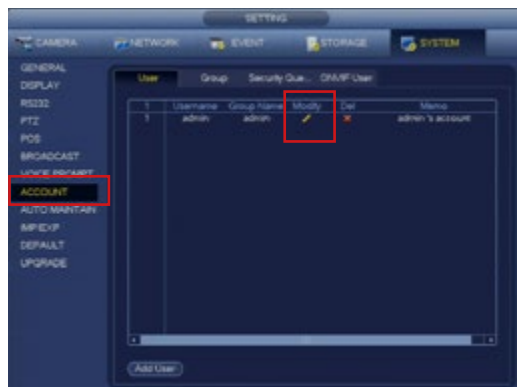
When adding additional users to the system for local or remote access, it is recommended to restrict access to certain functions not required by the user.

To edit the permissions of a specific user or guest account follow the steps below.

1. Enter the Main Menu (Right Click > Main Menu)



2. Select System settings (Bottom Right) and click Account from the left sub menu list. On the account you want to change the password for, click the Modify Icon



3. In the System tab uncheck any function that the user does not require, such as System, Account or Network settings. Select the Playback & Monitor tabs and uncheck any camera channels the user should not be able to view, this will hide the images on these channels from the user.



4. Click Save to confirm the new user settings