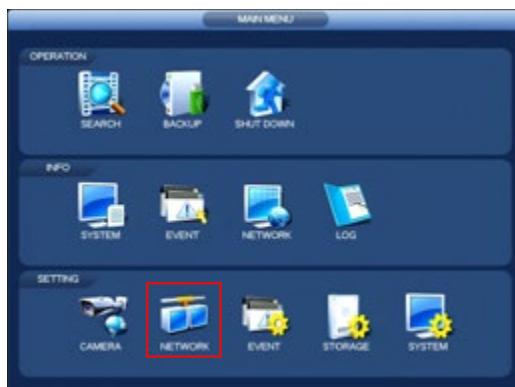


Use P2P

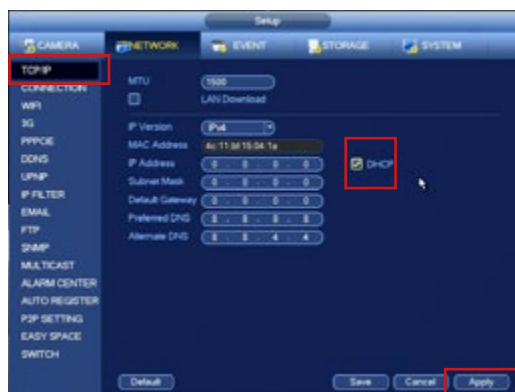
We recommend using P2P when connecting your device to the internet. P2P hides the device from public view.

1. Connect NVR/DVR to network via Ethernet cable
2. Enter the Main Menu (Right Click > Main Menu)



3. Go to Network > TCP/IP

4. Enable DHCP and click **Apply**



5. Enter Menu > Network > P2P

6. Enable P2P option and click **Apply**

7. The Status box should now report Connect Success or Online (varies by model)



It will now be possible to connect to the system via both the mobile application and Smart PSS PC software. Select P2P as the connection method when adding the device to the software.