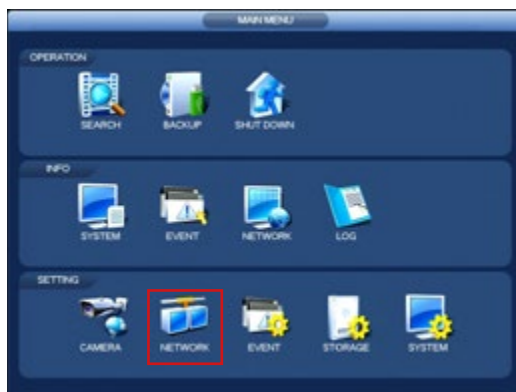


Enable IP Filter

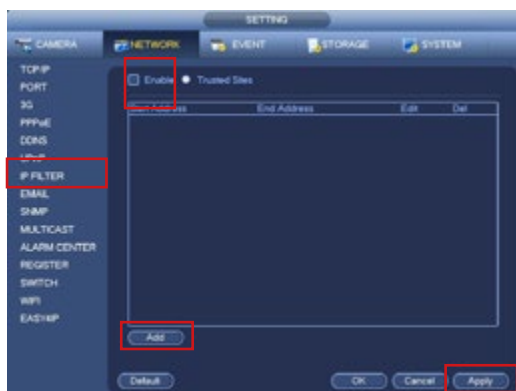
When a recorder has been configured for remote access, it is possible to secure the device further by utilising the IP Filter feature. Using this feature, remote access can be limited to specific remote IP addresses, IP address ranges or individual device MAC addresses.

To configure the IP filter, follow the steps below.

1. Enter the Main Menu (Right Click > Main Menu)



2. Go to Network > IP Filter



3. Check the enable box and click the Add button



4. There are three types of IP filter that can be selected

IP Address Enter a single IP address to grant remote access to, this is useful if the remote sites that will access the recorder have a static IP address

IP Segment Enter a range of IP addresses to grant remote access to, for example:
192.168.1.100 - 192.168.1.110

MAC Address Enter a remote devices MAC address to grant remote access to, for example a mobile phone or specific remote computer

Once all entries are added, click Apply followed by Save



Official UK distribution partner

