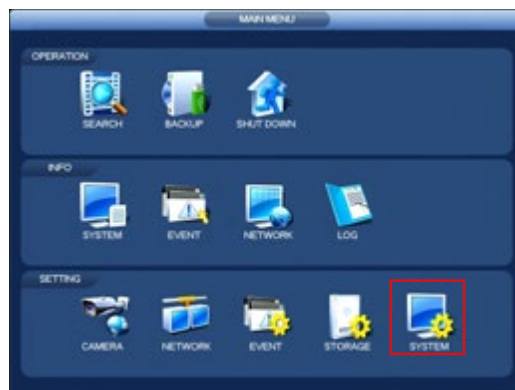


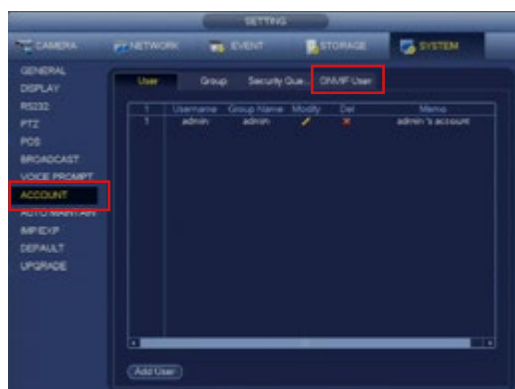
Change ONVIF Password

The ONVIF password is used when streaming camera channels from the recorder to another device using the ONVIF protocol. By default the ONVIF password is set to admin. For security reasons, it is recommended to change the password to a strong password using at least 8 characters and is made up of a combination of special characters, numbers and upper & lower case letters.

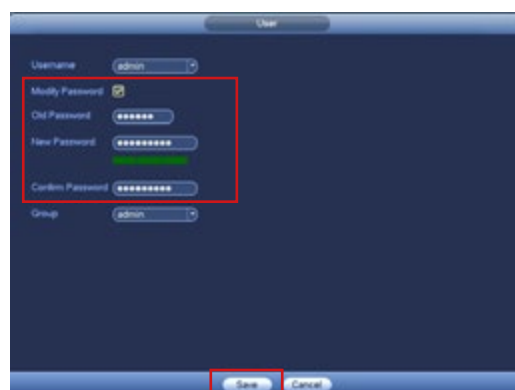
1. Enter the Main Menu (Right Click > Main Menu)



2. Select System settings (Bottom Right) and click Account from the left sub menu list followed by the Onvif User tab



3. Check the Modify Password box and input the current password (admin by default). Enter your new password into the new password & confirm password text boxes. It is recommended to choose a strong password with a minimum of 8 characters combining lower case, upper case, numbers & special character.



4. Click Save to confirm the password change