

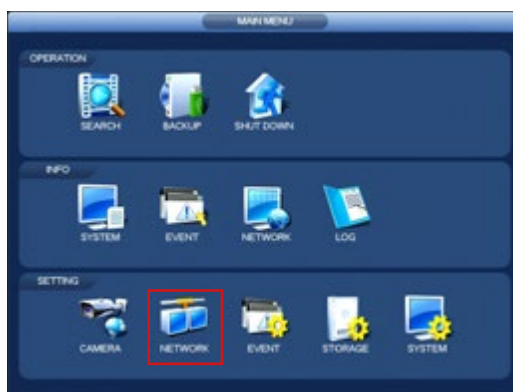
## Change Default HTTP and TCP port

When configuring your device for remote access it is always recommended to change the default port numbers. For example, to access the a Dahua device from a remote location using the web browser, the HTTP port (80) and TCP (37777) should be forwarded within the on site router.

These ports can be set to anything of your choice, however it is recommended to use a number that is not commonly used by another type of application such as FTP (21), RTSP (554) etc. It is recommended to use port numbers of at least 4 digits.

To change the port numbers on your recorder, follow the steps below.

1. Enter the Main Menu (Right Click > Main Menu)



2. Go to Network > Connection



3. Select the port number you wish to change and input the new port number using the onscreen keyboard.

Click Apply followed by Save to confirm the setting.

If your recorder prompts to reboot to save the settings, click Yes to confirm.

## Forward only the ports you need

When configuring your device for remote access there are multiple ports used by the recorder for remote access. Which ports to forward in your router depends on which services you will be using for remote access.

For remote access via applications such as DMSS or Smart PSS only the TCP port (37777) is required.

When accessing the recorder remotely using a web browser, both the HTTP port (80) and TCP port (37777) are required.



Official UK distribution partner

